



## Contents

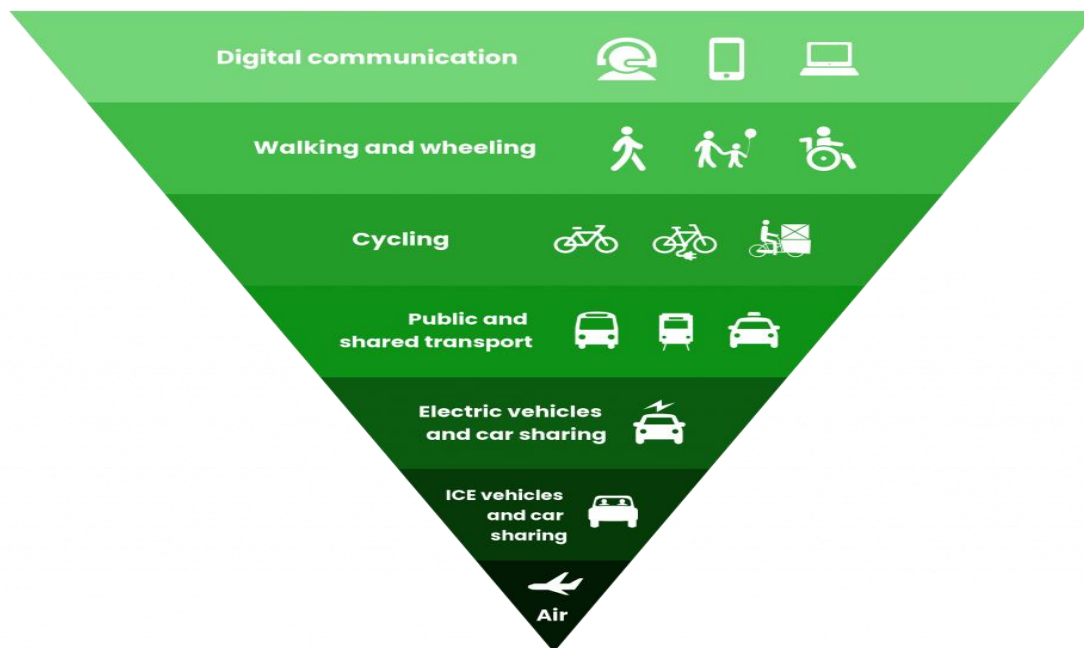
Purpose.....	2
Hierarchy of Sustainable Travel.....	2
Digital Communication.....	2
Walking and Wheeling.....	3
Cycling.....	3
Public Transport.....	3
Electric Vehicles and Car sharing.....	3
ICE Vehicles and Car sharing.....	3
Air Travel.....	4
Issue Control Sheet.....	5

**Purpose**

Our strategy for reducing travel emissions involves both reducing the number of journeys our colleagues make and also looking for less carbon-intensive ways of working. Our sustainable travel policy strongly encourages our colleagues, to consider all options that are available. Speedy has committed to the Science Based Targets initiative to set science-based emissions reduction targets across the entire value chain to achieve Net Zero Carbon by 2040 that are consistent with keeping global warming to 1.5°C above pre-industrial levels. Business travel forms a significant part of our carbon footprint, and our colleagues can support our Decade to Deliver Sustainability Strategy by choosing the most sustainable method of transport for journeys.

**Hierarchy of Sustainable Travel**

To support Speedy’s Net Zero Target by 2040, and a reduction of 42% in our Scope 3 emissions by 2030, we will be adopting the Hierarchy of Sustainable Travel. The sustainable travel hierarchy is a useful tool to help you think about improving the impact of your journeys. The higher up the hierarchy, the more sustainable and greener the travel option. The most sustainable option is walking where the only resource required is you, followed by cycling which requires some equipment.



**Digital Communication**

Many people have swapped the daily commute for working at home, so consider whether you can make use of the wide range of digital communication options available before making a journey. Speedy now has Video Conferencing (v/c) within selected locations, these are

- Haydock – Chase House
- Milton Keynes
- Tamworth
- Glasgow
- London Gateway

The VC facilities are a halfway house between completely remote working and fully in person meetings and the technology should mean a great experience is still possible for all attendees without the need for everyone to travel long distances.

### **Walking and Wheeling**

Just below digital communication is walking and wheeling. The only resource required to get from A to B is your own energy, so this is the most sustainable and green way to make a short journey. Each mile you walk rather than drive saves 275g of carbon dioxide (CO<sub>2</sub>).

### **Cycling**

This mode of travel requires some equipment (a bike and a helmet) to get you started. Jumping on your bike is a great option if you want to cover short distances quickly, Speedy offers cycle to work, visit the [Rewards](#) area on the Hub for more information.

### **Public Transport**

There may be times when active travel isn't a suitable option, for example you may be travelling a long distance or have luggage.

Getting the train instead of taking the car can help you reduce your carbon footprint while you travel. Shared and public transport also reduces traffic congestion and improves local air quality. It can also be a better use of your time, allowing you to check messages, read a book or chat with friends and family while you travel. You will need to book all business travel with our dedicated supplier [Reed & Mackay](#).

### **Electric Vehicles and Car sharing**

Speedy is transitioning all company cars to electric/hybrid to reduce carbon emissions for business travel and to support the Government target to phase out the sale of new petrol and diesel cars and vans by 2030, with all new cars being fully zero emission at the tailpipe by 2035. If you can car share, you are eligible to reclaim 5p per mile, please read our Travel and Expenses Policy for further information on how to do this.

### **ICE Vehicles and Car sharing**

Petrol and diesel cars (Internal Combustion Engines, (ICE)) contribute to local air pollution, with 80% of nitrogen dioxide recorded at roadside in the UK. Reducing your dependency on this type of car can make a big difference to the environment – and to your wallet.

So, where travel is required in a private vehicle that is non-electric can you consider other sustainable travel options first. If you are thinking about changing your private vehicle to electric the Government offers grants for the vehicle and the charging point installation to lower costs. Energy companies also offer preferential electricity rates if you switch to an electric car. If you purchase renewable energy even the electricity you use to charge your charge will be zero emission. If you can car share, you are eligible to reclaim 5p per mile, please read our Travel and Expenses Policy for further information on how to do this.

## Air Travel

Air travel is the least sustainable method of transport

The aviation industry is working on ways to lower carbon emissions from flying, but we will still need to minimise our flights, a flight from Edinburgh to London, for example, emits around 146kg of CO<sub>2</sub> per passenger, compared to as little as 19kg if you made the journey by train.

When travelling shorter distances within the UK, trains will take you into the city centre, whereas flights will land and take-off from the outskirts. When you consider this along with check-in times, there often isn't much of a time benefit to flying. When travelling long distances within the UK, why not consider taking the train instead? You will need to book all business travel with our dedicated supplier [Reed & Mackay](#).



**Issue Control Sheet**

Issue Record Sheet			
Issue	Amendment Date	Next Review	Comment
01		June 2025	New Policy
02	21 <sup>st</sup> August 2023	June 2025	Updates made to the policy re introduction of video conferencing
03	08 <sup>th</sup> May 2024	June 2025	Updates/Amendments Logo updated. Locations updated that have video conferencing facilities. Car sharing mileage expenses updated

Document Authors & Owner		
Name	Signature	Date
Angela Hughes ESG Manager	Angela Hughes	08/05/2024

Document Approval		
Name	Signature	Date
Amelia Woodley ESG Director	<b>Amelia Woodley</b>	08/05/2024